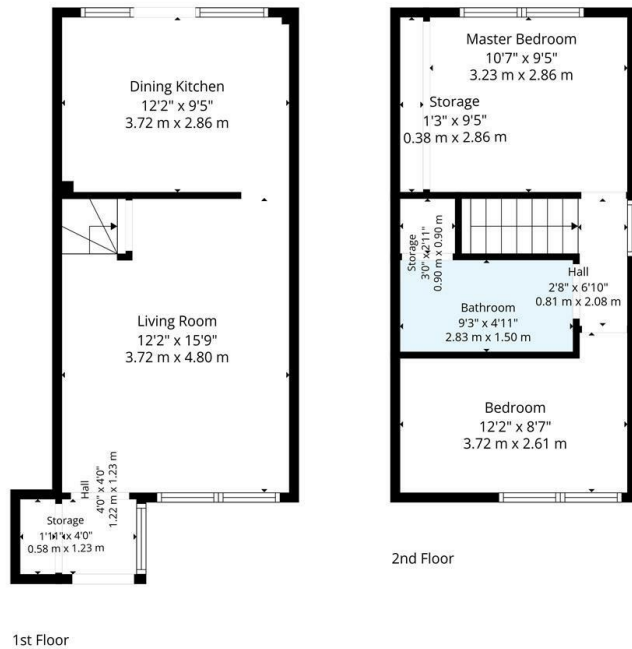




## 15 Ferndale Drive,, Summerston, Glasgow, G23 5BU

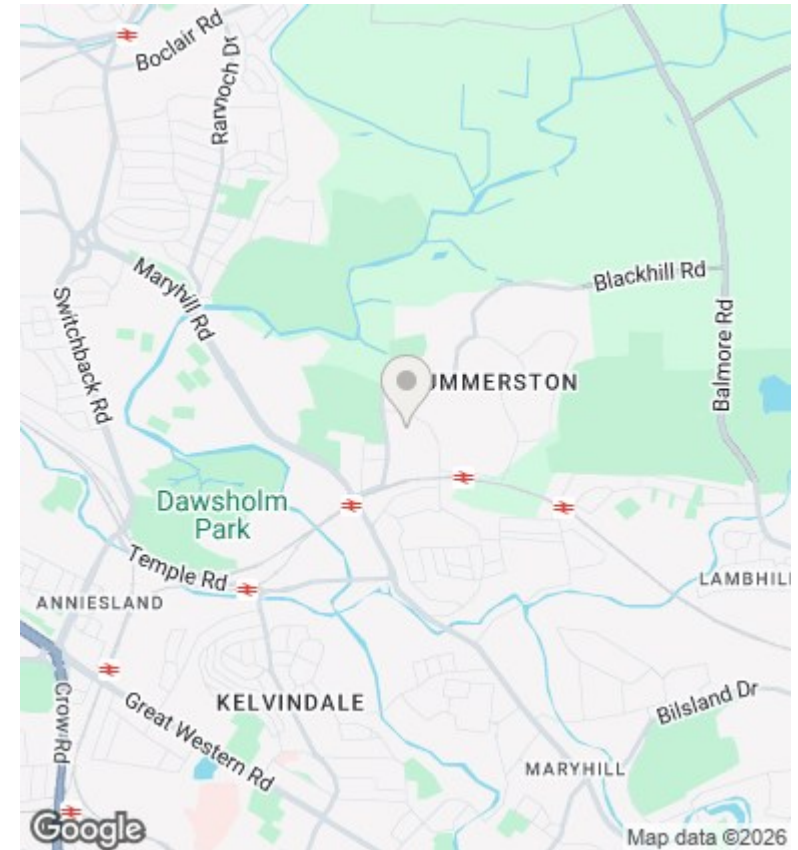
Offers Over £180,000

- Modern Two bedroom semi detached villa
- Stylish Decor throughout
- Modern Kitchen and Bathroom
- EER Band C
- Quiet Cul-de-sac setting
- Driveway parking
- Gas central heating and double glazing
- Immaculate presentation
- Enclosed Landscaped garden to rear with decking
- Close to local amenities in Summerston



**TOTAL: 619 sq. ft, 58 m<sup>2</sup>**  
 1st floor: 329 sq. ft, 31 m<sup>2</sup>, 2nd floor: 290 sq. ft, 27 m<sup>2</sup>  
 EXCLUDED AREAS: STORAGE: 29 sq. ft, 3 m<sup>2</sup>, WALLS: 83 sq. ft, 7 m<sup>2</sup>

Floor Plan Created By Cubicase App. Measurements Deemed Highly Reliable But Not Guaranteed.



## Directions

## Viewings

Viewings by arrangement only. Call 01417262111 to make an appointment.

## Council Tax Band

## EPC Rating:

C

